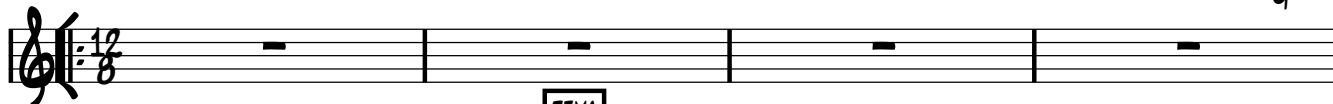
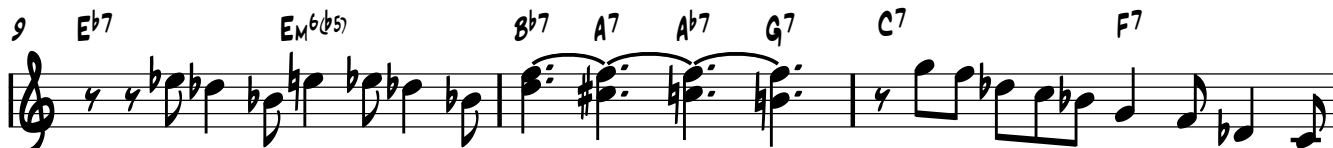
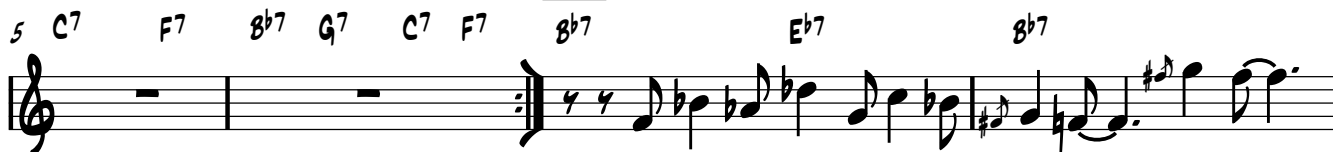


SLOW BLUES (A MASSIMO TROISI)

SOLI

B^b7 E^b7 B^b7 E^b7 E_M^b(^b5) B^b7 A⁷ A^b7 G⁷

TEMA



ARRANGIAMENTO

- SOLO CHITARRA 12 MISURE TOTALI SULLA GRIGLIA ACCORDI SOLI
- TEMA ORGANO 10 MISURE TOTALI